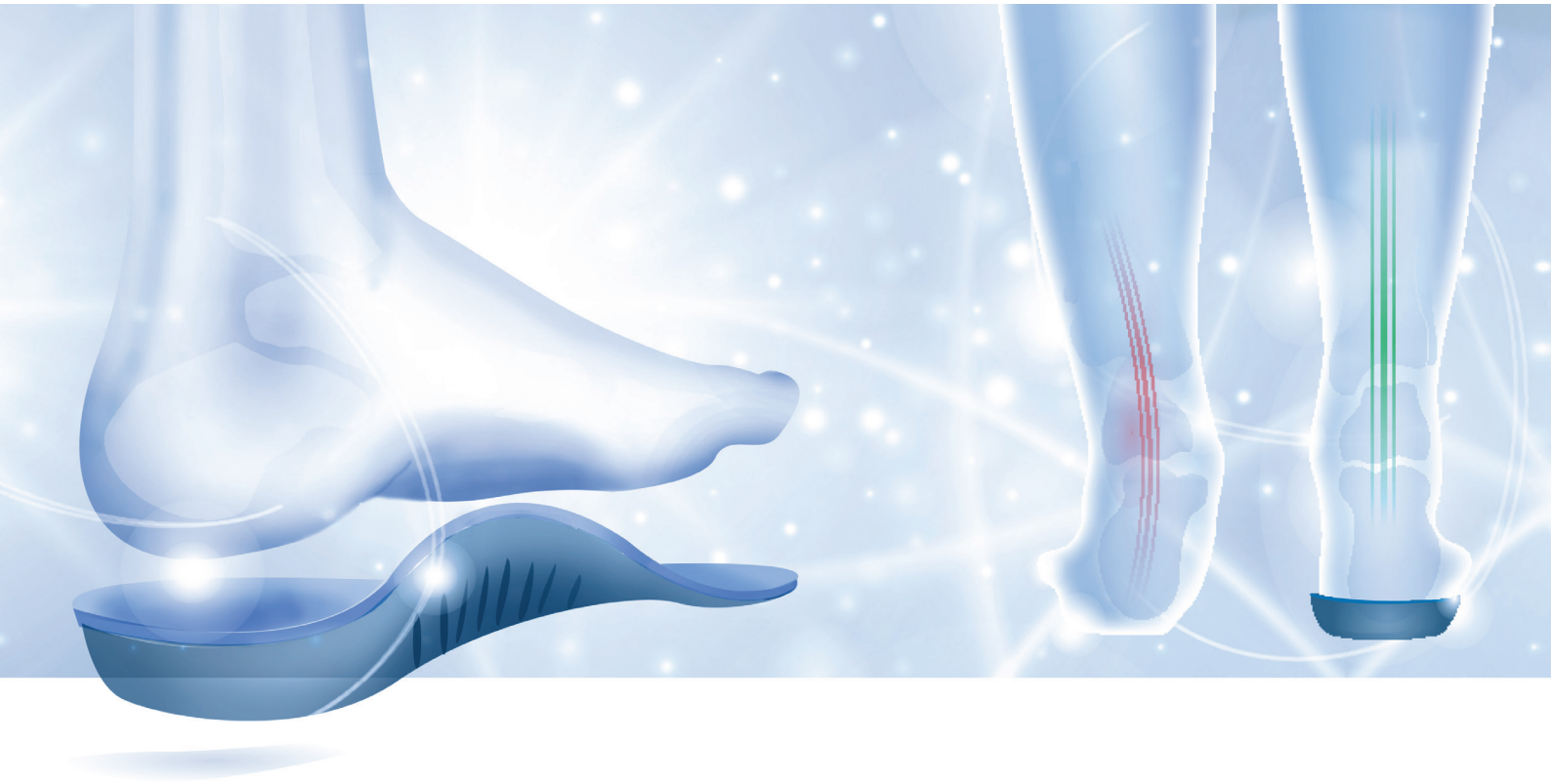




Foot & logics  
*the science of walking comfort*



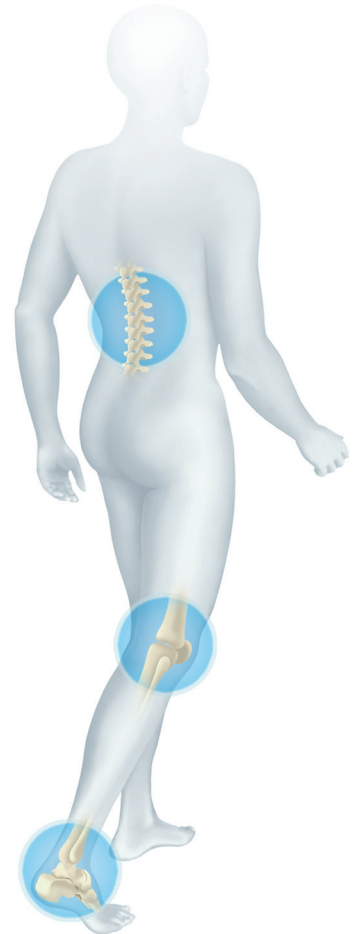
# About Footlogics

Footlogics is an **Australian-owned** company, specialising in the manufacturing and distribution of foot orthotics. Footlogics products are sold Australia-wide and proudly exported to New Zealand, Canada, Europe, South-Africa, SE-Asia and South-Korea.

Recently, Footlogics gained approval by the **NHS** and our orthotics are now prescribed in public hospitals across the UK.

The body is a biomechanical kinetic chain where abnormal movements in one joint can interfere with the movements in other joints. Medical research in the past 15 years has clearly established the link between poor foot function and injuries in other parts of the body, such as the knees, hips and lower back.

Footlogics orthotics **restore our natural foot function**, allowing joints and muscles to function more efficiently. In turn, they help relieve and prevent not only painful foot conditions, but also biomechanical complaints in other parts of the body.



# Footlogics *Plantar Fasciitis*



## Product features:

- made of medium density EVA
- biomechanical arch support
- built-in metatarsal raise
- Podflex heel and forefoot pads
- deep heel cup
- micro-fibre top cover



Footlogics ***Plantar Fasciitis*** orthotics are specifically designed to treat Plantar Fasciitis, heel pain and heel spurs. The insole supports the arch, which in turn **reduces stress on the plantar fascia ligament** under the foot, thereby **treating the cause** of heel pain. In addition to wearing the orthotics, we recommend daily exercises (such as calf stretches). The insole can also be useful for the treatment of Achilles Tendonitis and Metatarsalgia (pain under the ball of the foot).

***This orthotic is suitable for all types of lace-up shoes, including walking shoes and joggers. Also, suitable for work shoes and work boots.***

# Footlogics *Casual*



## Product features:

- made of medium density EVA
- medium arch support
- Podflex heel pad
- deep stabilising heel cup
- soft velours top layer



Footlogics *Casual* controls **over-pronation** (rolling in of the feet and collapsing of the arches). Support and re-alignment of the foot and ankle helps relieve foot complaints such as Plantar Fasciitis (**heel pain**), Achilles Tendonitis, as well as flat feet and fallen arches. This insole also improves overall body posture and may help relieve knee pain and lower back pain.

*This orthotic is especially suitable for mens and womens slip-on shoes. It can also be worn in flat or low-heeled mens or womens sandals.*

# Footlogics *Comfort*



## Product features:

- medium density E.V.A. base
- high arch support
- metatarsal support
- Durapontex heel & forefoot pads
- deep stabilising heel cup
- soft velours top layer



Footlogics *Comfort* controls **overpronation** - rolling in of the feet and collapsing of the arches. The re-alignment of the feet helps relieve many foot complaints such as heel pain, Achilles Tendinitis, Metatarsalgia (ball of foot pain), as well as flat feet and fallen arches. This insole also improves overall body posture and may help relieve knee pain and lower back pain.

*This insole is suitable for all types of mens and womens lace-up footwear, as well as work boots.*

# Footlogics *Sensi*



## Product features:

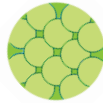
- soft P.U. /Gel base
- anatomic arch support
- built-in metatarsal raise
- Plastazote® top layer
- deep stabilising heel cup



Footlogics *Sensi* is designed to protect the feet of Diabetes sufferers and helps reduce the risk of developing foot ulceration, as a result of neuropathy (the inability to feel pain, heat or cold). This anatomically-shaped insole distributes the forces of walking evenly over the entire surface of the foot to protect sensitive areas from excess pressure and friction. In addition, the soft **Plastazote layer** protects the skin from excess rubbing and chafing.

*This full-length insole is suitable for all types of lace-up shoes.*

# Footlogics *Sports*



Closed-cell  
PU Technology



## Product features:

- firm T.P.U. plastic outer shell
- cushioning P.U. mid base
- polymer gel heel & forefoot pads
- anatomic arch support
- built-in metatarsal raise
- stabilising heel cup



Footlogics *Sports* is made of a cushioning P.U./Gel base and a firm T.P.U. plastic outer shell. This unique material combination ensures the orthotic insole provides **both support and cushioning!** By correcting excess pronation and providing shock-absorption, the insole is perfect for running and sports. Footlogics Sports helps prevent and relieve Plantar Fasciitis, Achilles Tendonitis, Shin Splints and Runner's knee.

*Footlogics Sports is suitable for various types of sports footwear, including tennis, golf and basketball shoes, joggers and runners. The product also provides excellent comfort for walking.*

# Footlogics *Football*



## Product features:

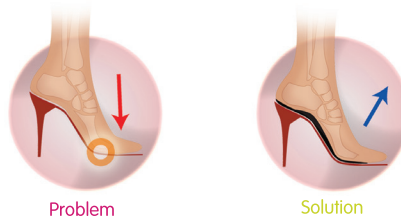
- firm thermo-plastic outer shell
- cushioning P.U. mid base
- polymer gel heel & forefoot pads
- medium-height arch support
- built-in metatarsal raise
- slim design for perfect fit



Footlogics **Football** is made of a soft and cushioning PU & Gel base, combined with a firm plastic outer shell. The insole helps control **excess pronation** - a contributing cause to many biomechanical injuries, such as Sever's Disease, Plantar Fasciitis, Achilles Tendonitis, Shin Splints and Patello-femoral syndrome (**knee pain**). Its narrow design and low arch profile creates a perfect fit inside the boot without cramping the feet.

***This insole is suitable for all types of football boots (AFL, NRL, Union and Soccer).***

# Footlogics *Catwalk*



## Product features:

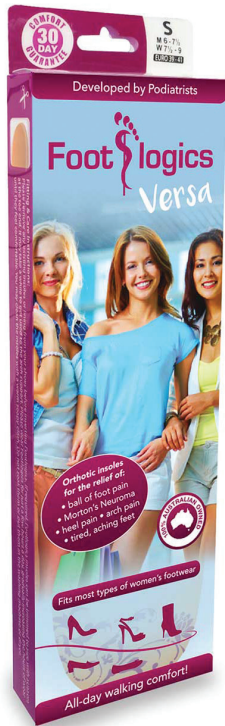
- made of closed-cell P.U. material
- cushioning, yet supportive insole
- gentle arch support
- built-in metatarsal raise
- super-micro fibre top cover
- adhesives to hold insole in place



Footlogics *Catwalk* is a breakthrough in walking comfort for ladies' footwear. Walking in heels means most of your body weight is placed on the front of the feet, causing the forefoot structure to collapse. This excess force leads to ball of foot pain, excess callous and corns etc. Catwalk orthotics support the arches and metatarsal bone structures, therefore distributing body weight **more evenly** and taking the pressure off the ball of the foot.

*Catwalk insoles are suitable for all types of women's footwear with a heel, including boots and sandals. Also suitable for narrow-fitting, flat footwear such as ballerinas.*

# Footlogics *Versa*



## Product features:

- unique, slim-line design
- firm outer shell
- soft P.U. base
- strong arch support
- metatarsal dome
- fits most types of women's footwear



New Footlogics *Versa* is a slim, ultra-thin orthotic insole that meets the challenge of providing support and re-alignment in almost every type of women's footwear. This super-thin orthotic prevents the heel from slipping out of the shoe or cramping the toe box. Yet, it offers excellent arch and metatarsal support. Suitable for people suffering from **heel pain** or **ball of foot pain**.

*Versa* insoles are suitable for most types of women's footwear with low to medium heel, including boots and sandals. Also suitable for ballerinas.

# Footlogics *Metatarsalgia*



## Product features:

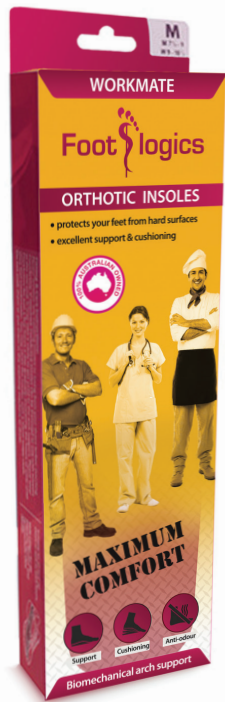
- made of medium density E.V.A.
- medium-height arch support
- excellent ball of foot cushioning
- prominent metatarsal support
- Podflex heel and forefoot pads
- comfortable suede top cover



Footlogics *Metatarsalgia* is specifically developed to help relieve Metatarsalgia - a burning pain under the ball of the foot. The orthotic is also helpful in relieving the symptoms of Morton's Neuroma. Both conditions are associated with excess pronation and collapsing of the forefoot structure. These orthotics reduce excess pronation and support the metatarsal bones, thereby addressing the **cause** of these common foot conditions.

*This insole is suitable for most types of mens and womens footwear, including slip-on shoes and sandals.*

# Footlogics *Workmate*



## Product features:

- firm TPU plastic outer shell
- cushioning P.U. mid base
- gel heel and forefoot pads
- medium-height arch support
- built-in metatarsal raise
- stabilising heel cup



Footlogics **Workmate** is the ideal insole for people who are on their feet all day, especially when standing on hard surfaces for long hours. The insoles provide excellent cushioning for tired, aching feet. In addition, the product supports the feet, giving overall stability and balance for knees, hips and lower back. Footlogics **Workmate** helps make work shoes more comfortable. With less strain on the muscles and ligaments, it allows the wearer to get through the working day without pain or discomfort.

***This insole is suitable for most types of work shoes, including work boots. Also excellent for nurses shoes and footwear worn by chefs, cooks and waiters/waitresses.***

# Footlogics *Kids 3/4 length*



## Product features:

- firm E.V.A base
- cushioning Durapontex heel pad
- strong arch support
- deep stabilising heel cup



Footlogics **Kids** are a medical-grade orthotic designed to correct excessive pronation. Excellent for children with **flat feet or fallen arches**. The orthotics provide biomechanical support and restore the child's natural walking pattern. By re-aligning the young child's feet early on, many biomechanical complaints can be prevented, allowing the feet to develop naturally. Common complaints associated with excess pronation are Sever's Disease (*children's heel pain*) and Osgood Schlatter's (*children's knee pain*).

***This insole is suitable for most types of children's footwear, including school shoes***

# Footlogics *Kids Full-length*



## Product features:

- made of flexible Q- E.V.A.
- cushioning, yet supportive insole
- medium-high arch support
- built-in metatarsal raise
- sports-mesh top cover



Footlogics *Kids Full-length* orthotics offer the same benefits as the Kids 3/4 insoles and are suitable for **fallen arches, flat feet, over-pronation, heel or knee pain**. However, the full-length shape means the insoles cannot slide forward during sports and running. In addition, the base material is softer and more flexible compared to the firm 3/4 model, making the insole more suitable for running and sports.

*Kids Full-length orthotics are suitable for all types of sports shoes, as well as regular lace-up school shoes.*

# Footlogics *Tiki Girl*



## Product features:

- fashionable and feminine orthotic thongs
- made of unique cushioning, light-weight material
- built-in biomechanical arch support
- anti-slip outsole thread

New Footlogics 'Tiki Girl' orthotic flip-flops provide excellent support and cushioning. The perfect solution at home and in summer for people suffering from **Plantar Fasciitis, Metatarsalgia, fallen arches, tired, aching feet or legs**. Or for anyone who just wants to enjoy walking comfort, and look good at the same time!

*Available in 4 colours:*



Footlogics

# Men's Flip-flop



## Product features:

- made of unique cushioning, light-weight material
- built-in biomechanical arch support
- anti-slip outsole thread

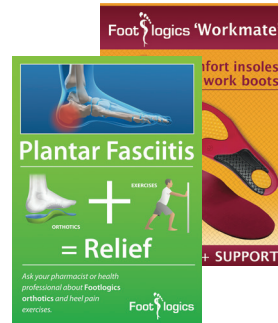


The Footlogics orthotic Men's flip-flops are a great 'add-on sale' for people who already enjoy the comfort of Footlogics orthotics inside their shoes. Especially for those suffering from **Plantar Fasciitis**, Ball of Foot pain, fallen arches or other foot problems Footlogics flip-flops are the perfect solution at home or during those hot summer months. The flip-flops may also help in the relief of knee pain and lower back pain.

# Display materials



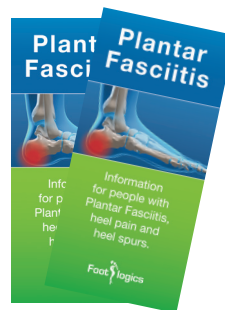
4-sided floor stand  
(for thongs and/or insoles)



A3 posters



Sample ring



Plantar Fasciitis  
leaflet

## Header cards

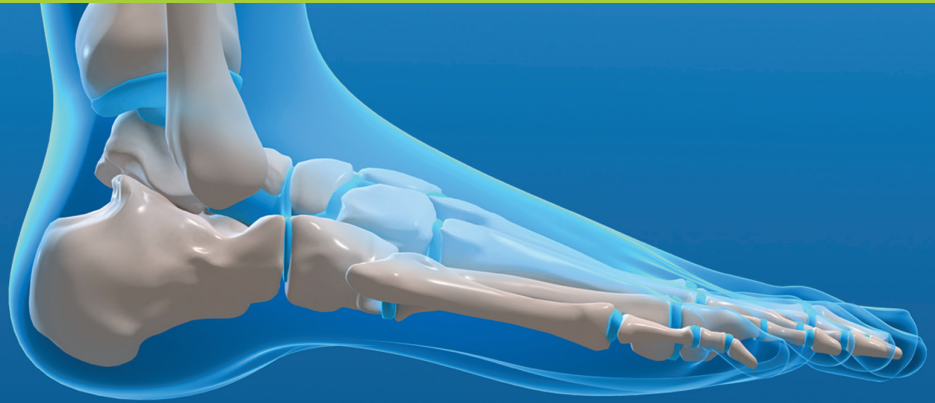


Sizing floor mat



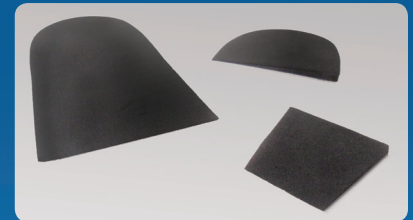
Product leaflet

# Footlogics *Medical*



**FIRM  
EVA**

Heat-  
mouldable



*Wedges & Heel lifts*



*Medical Full-length*



*Medical 3/4-length*

## Product features:

- high density EVA
- biomechanical arch support
- shock-absorbing heel pad
- built-in metatarsal raise
- deep stabilising heel cup

Footlogics *Medical* are available in three-quarter and full-length. Made of high density firm E.V.A the orthotics are ideal for people with severe excess pronation or flat feet. The orthotic prescription can be fine-tuned by using wedges or heel lifts. A rearfoot varus wedge or forefoot wedge can be applied to increase biomechanical control, or a heel lift (**4 or 8mm**) for patients with a leg length discrepancy. The orthotics can be heat-moulded, if required.

## Footlogics *Sizing Guide*

	Mens	Womens	UK	EURO
XS	4 - 5½	5 - 6½	3 - 4½	35 - 38
S	6 - 7½	7 - 8½	5 - 6½	39 - 41
M	8 - 9½	9 - 10½	7 - 8½	42 - 43
L	10 - 11½	11 - 12½	9 - 10½	44 - 45
XL	12 - 14	—	11 - 13	46 - 48



*the science of walking comfort*